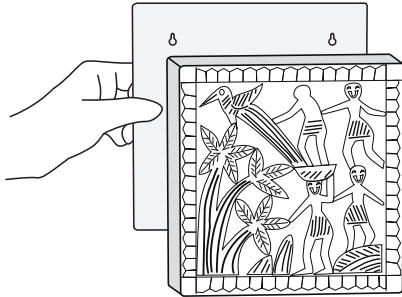
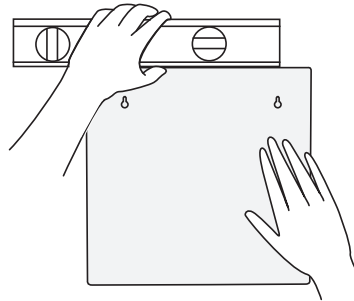


STEP 1



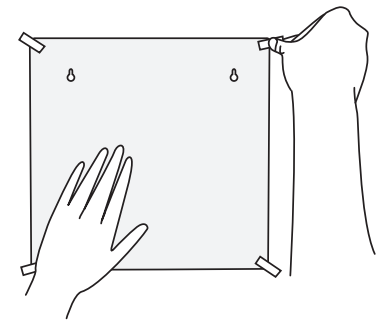
Take the paper installation template.

STEP 2



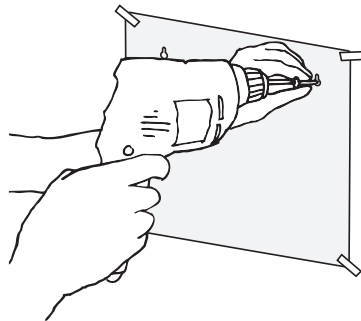
Level the template on wall where piece will be installed.

STEP 3



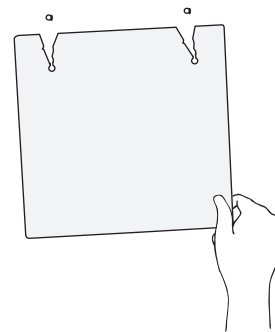
Secure the template on wall with tapes.

STEP 4



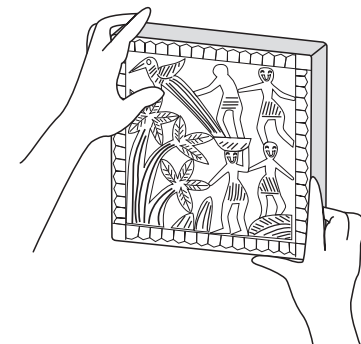
Drill a screw into nailhole marked on template. Be sure to drive the screw **HORIZONTALLY**. When hanging on drywall, use drywall screw anchor.

STEP 5



Remove the template from the wall.

STEP 6



Hang the wall piece on screws & secure it in place.